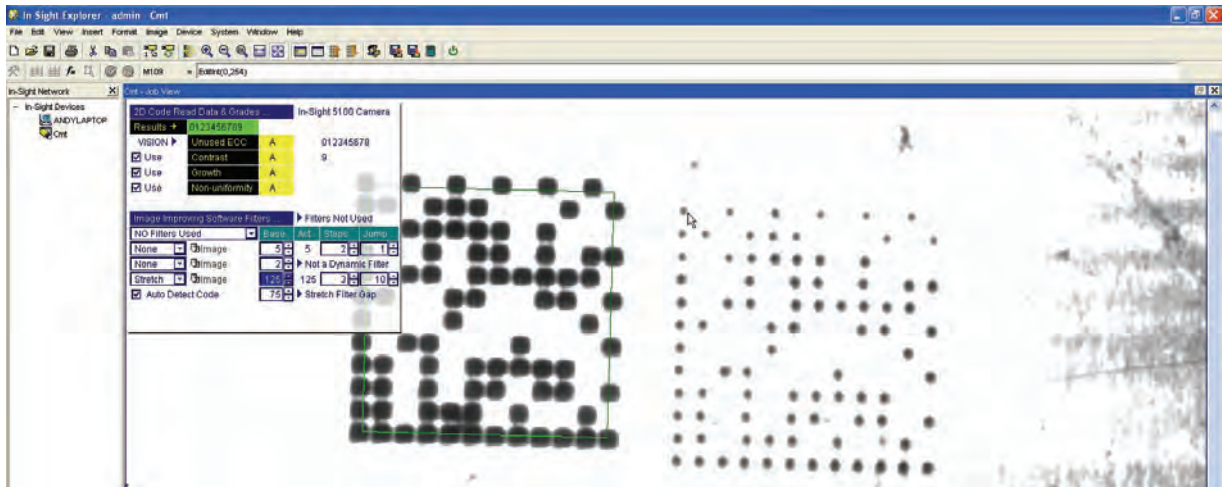




Tomorrow's marking technology...today!

Square-Dot®

CMT's **patented high resolution marking process** to apply **2D/UID machine readable codes** to a variety of materials. This process scribes a matrix of small square cells into the material. The mark provides the best direct part reading with a vision system as the cells are filled in similar to a laser mark but much deeper and often with better contrast.



The Square-Dot® process may be implemented with any of CMT'S I-Mark Scribe systems, these include I-Series air Scribe & the C-Series electric or air scribe.



The Square-Dot® patented process uses a diamond tip to draw squares on material to create a machine readable 2D/UID code. This technique creates both a depressed square and

