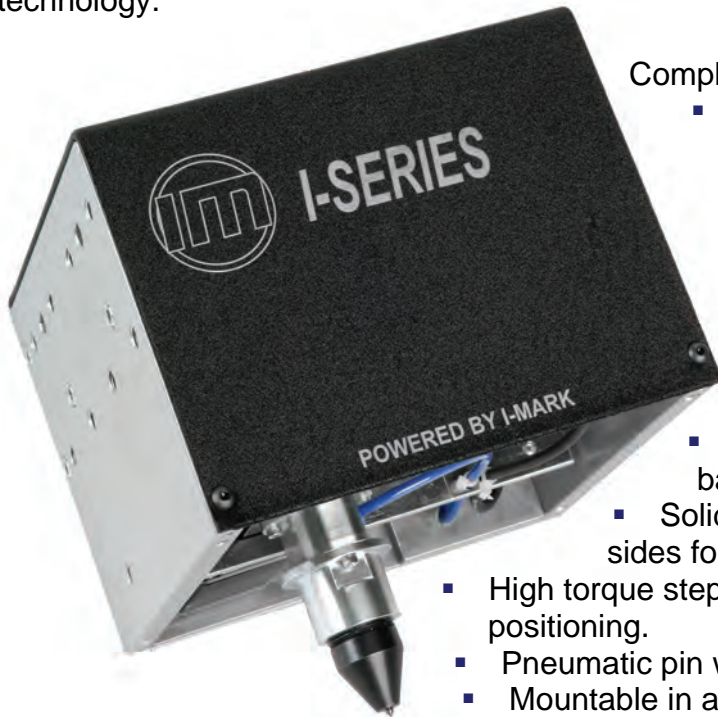




# Tomorrow's marking technology...today!

## I-Series Dot-Peen Unit

**Compact industrial integration dot-peen** marking system with heavy duty frame and linear rail guidance system to ensure precise operation. The marking speed is 3-5 characters per second. It has a very small foot print with 3 sides available for mounting. These systems come with two marking window options: medium and large size. The I-Mark controller uses the latest in drive technology.



Complete marking unit for integration:

- Pneumatic Dot-Peen Marking Head in two window sizes
- Model 200 I-Mark Controller
- I-Mark software for programming (details page 22)
- Power cable, Marking head cable, Cross over cable, and LAN cable

### The I-Mark-ID Marking Head:

- Air and controller connection located on back of marker.
- Solid aluminum frame with ½" plates on three sides for easier mounting, all pre-drilled & tapped.
- High torque stepper motors and linear rails for precise positioning.
- Pneumatic pin with carbide tip to mark materials up to 45 Rc
- Mountable in any orientation

### The I-Mark Model 200 controller:

- Compact design for easy installation into production equipment.
- Communication options including remote programming over LAN, and operational controls via I/O, Modbus, Serial, Ethernet IP ect.
- Monitor upgrade and more details page 18.

### Options:

- Pedestal mount
- Upgrades: database and camera integration



## I-Series Dot-Peen Unit

### I-Series Dot-Peen How to Order

**To Order: Select only the symbols that represent the marker feature that is needed. Place that symbol in the sequence as shown.**

Model/Feature	Symbol	Example
I-Mark Integrator Dot-Peen	IM-ID	IM-ID60-D-X-25
Medium Marking Window	60	
Large Marking Window	200	
Without Shield	-	
With Shield	D	
Standard Pin	-	
2" Extended Pin	X	
10 ft (3m) Cable	-	
25 ft (7.5m) Cable	25	

### Utilities:

- Controller requires 110 VAC power, 6 ft (1.8m) electrical cord supplied
- Air power required, 8mm push-in tube fitting requires connection to air supply (30-75 PSI operating range)

### Features:

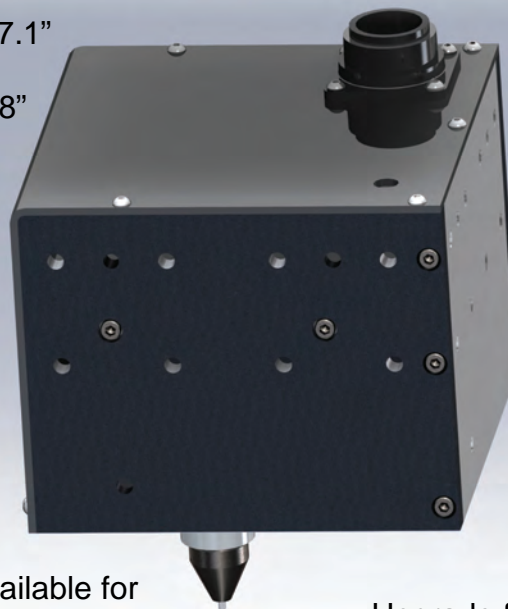
- High torque stepper motors with cog tooth drive belts allow mounting of unit in any orientation
- 2 marking windows;
  - Medium = 1.59" x 2.35" (40 x 60mm)
  - Large = 3.18" x 7.87" (80mm x 200 mm)
- Marking speed of 5 (1/8", 3mm) cps
- 10 ft (3m) or 25 ft (7.5m) cable from head to controller
- Carbide pin included – Marks plastic, wood and metals (up to 45 RC)
- Weight of marking head only: 12.42 lbs (5.6 kg)



### Illustration of IM-ID series

Envelope dimensions:  
 Medium - 8.44" high x 7.1" x 7.1"  
 (214 x 180 x 180mm)  
 Large: 8.44" high x 8.7" x 12.8"  
 (214 x 220 x 325mm)

Marking windows:  
 Medium - 1.59" x 2.35"  
 (40 x 60mm)  
 Large - 3.18" x 7.87"  
 (80mm x 200mm)



Mounting available on three sides

Standard pin or 1" pin extension for marking in recesses

Complete detailed drawings available for download at [www.marking-machines.net](http://www.marking-machines.net)

Upgrade for industrial debris shield



# Tomorrow's marking technology...today!

## I-Series Silent Scribe

**"Silent Scribe"** version of the popular I-Series Dot-Peen. This ball screw drive system has a marking speed of 4 characters per second in scribe mode. The systems come with two marking window options: medium and large size. This system is UID/2D Square-Dot® Compatible. The I-Mark controller uses the latest in drive technology.



Complete marking unit for integration:

- Pneumatic Scribe Marking Head in two window sizes
- Model 200 I-Mark Controller
- I-Mark software for programming (details page 22)
- Power cable, Marking head cable, Cross over cable, and LAN cable

### The I-Mark-IS Marking Head:

- Air and controller connection located on back of marker.
- Solid aluminum frame with ½" plates on three sides for easier mounting, all 3 pre-drilled & tapped.
- High torque stepper motors and ball screw drives for precise positioning.
- Pneumatic pin with diamond tip to mark hard parts 45 - 65 Rc

- Mountable in any orientation

### The I-Mark Model 200 controller:

- Compact design for easy installation into production equipment.
- Communication options including remote programming over LAN, and operational controls via I/O, Modbus, Serial, Ethernet IP ect.
- Touch screen/monitor upgrade and more details page 18

### Options:

- Pedestal mount
- Upgrades: database and camera integration



## I-Series Silent Scribe

### I-Series Scribe How to Order

To Order: Select only the symbols that represent the marker feature that is needed. Place that symbol in the sequence as shown.		
Model/Feature	Symbol	Example
I-Mark Scribe	IM-IS	
Medium Marking Window	60	
Large Marking Window	200	
Without Shield	-	
With Shield	D	
Standard Pin	-	
1" Extended Pin	X	
10 ft Cable	-	
25 ft Cable	25	

### Features:

- High torque stepper motors with ball screw drive
- 2D and Square-Dot® capable
- 2 marking windows;
  - Medium = 1.59" x 2.35" (40 x 60mm)
  - Large = 3.18" x 7.87" (80mm x 200mm)
- Marking speed of 4-5 (1/8", 3mm) cps
- 10 ft (3m) or 25 ft (7.5m) cable from head to controller
- Diamond pin included – Marks hard and carbide metals (up to 65 RC)
- Weight of marking head assembly: 19lbs

### Utilities:

- Controller requires 110 VAC power, 6 ft (1.8m) electrical cord supplied
- Air power required, 8mm push-in tube fitting requires connection to air supply (30-75 PSI operating range)



### Envelope dimensions:

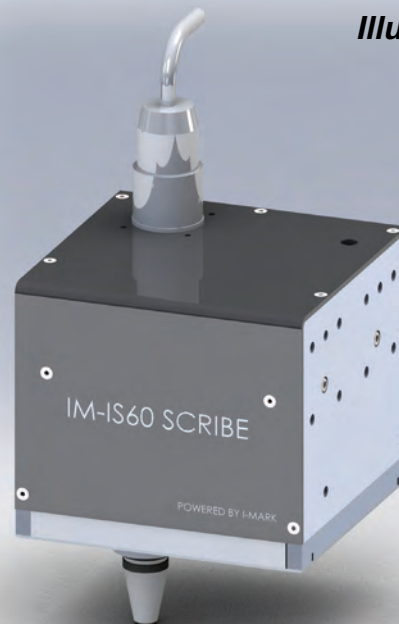
Medium - 8.44" high x 7.1" x 7.1"  
(214 x 180 x 180mm)

Large: 8.44" high x 8.7" x 12.8"  
(214 x 220 x 325mm)

### Marking windows:

Medium - 1.59" x 2.35"  
(40 x 60mm)

Large - 3.18" x 7.47"  
(80mm x 200mm)



### Illustration of IM-IS series

Mounting available on three sides

Standard pin or 1" pin extension for marking in recesses

Complete detailed drawings available for download at [www.marking-machines.net](http://www.marking-machines.net)

Upgrade for industrial debris shield