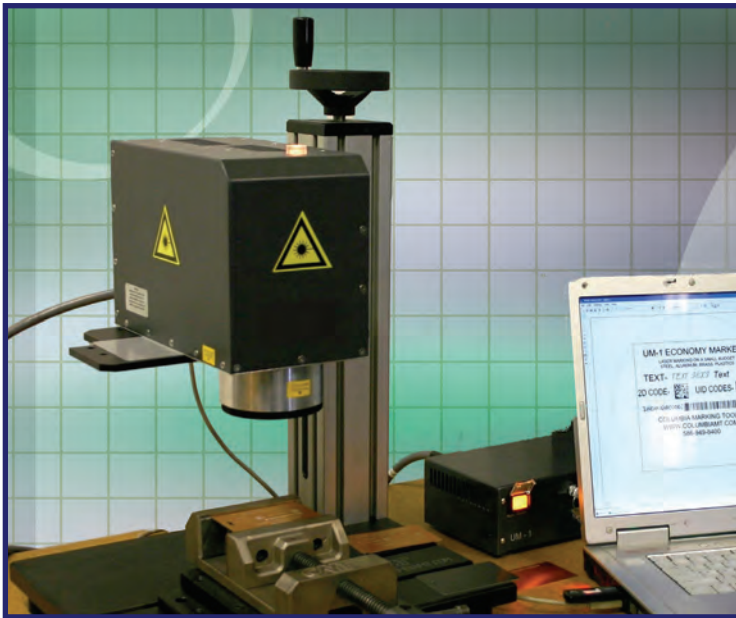




Tomorrow's marking technology...today!

Eco-Mark Laser Bench Top

Basic bench-top laser station offers price competitive solution for **low volume** laser marking applications. The *CMT EcoMark-2 Watt* Laser offers the very latest technology in laser marking equipment. The 2 watt laser machine will mark parts and materials that used to be possible only with a high powered laser machine.



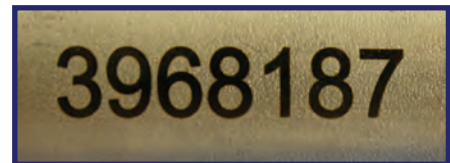
Includes:

- Laser Head
- Power Controls
- Benchtop stand
- Laptop computer
- Windows Software
- All required cables
- 2 safety glasses

Features:

- High speed / precision galvanometer beam control
- 100mm F-Theta Focusing Lens for a 60mm x 60mm marking area
- 1064nm wave length diode-pumped laser source (internally fiber coupled)
- Q-switched operation

- CDRH Class IV level of manufacture
- Benchtop stand with manual Z axis height adjustment
- Laptop with laser marking software pre-installed and configured
- Focusing diode option for easy focal point setting (height setting)



Power Supply Unit:

- 200 watt total power consumption, air cooled
- CDRH Class IV level of manufacture
- Input power: 100-240VAC, 2A 50/60 Hz

CMT Custom Marking Software featuring:

- Windows based software with extremely easy operator interface
- Including drag and drop features for text, graphics, barcodes, circles and lines

- A Red diode tracing feature which displays an outline box for graphics and true trace for text enabling precise marking legend placement onto part prior to actually marking the part
- The ability to save part files complete with all marking parameters
- Marks any true-type font
- Full serialization, includes placeholders and fixed data prefix/suffix.
- UID compliant